



S&S
Creativity unlimited



SHARPENERS,
DRAWING INSTRUMENTS
AND MUCH MORE..



We are KUM®

In 1919 Fritz Mußgueller and Adam Klebes founded the company KUM. After the death of Fritz Mußgueller, his son-in-law, Dr. Werner Lüttgens took over the company. Today KUM is still family owned in the third generation and led by Dr. Fritz Lüttgens and Patrick Becker.

In the early years KUM produced only sharpeners. Mainly without containers, a large area was dedicated to all kinds of fancy sharpeners. Many models created in the first years such as the 100-1 or the 400-5 have become solid classics in the KUM assortment.



In 1928, the famous globe sharpener entered the market. This item became a true classic renewed again and again due to geographic changes. In this same year KUM participated in the Leipziger Messe for the first time. Since then, we have been presenting our latest developments at Paperworld in Frankfurt and at many other international trade fairs every year.

In the 1930s, the company was still powered by hydropower. A creek nearby was redirected especially for KUM. In order to guarantee the high quality on an ongoing basis and to maintain its independence, KUM integrated its own tool and mold construction into the company in the 1950s. To date, the injection molds and most of the machines are still designed and built in-house.

The production of drawing instruments began in 1956. Over the years we added more and more product categories. Writing aids, school and arts brushes, writing pads, paintbrushes, scissors and much more. In addition to a broad and high-quality assortment, customer satisfaction is our top priority. Our sales department maintains a long-lasting business cooperation with partners all over the world about 70 countries.

Today we are proud to say that we are the oldest existing manufacturer of pencil sharpeners.



Why buy KUM®?

KUM® is attractive

- Polished metal parts give glossy, bright, and sophisticated look to all steel and magnesium components of KUM® products.
- High-precision injection molds produce clean-cut, solid KUM® “look” on all plastic components of the products.
- Quality color dye granulates are used in all plastic parts; KUM® transparent colors are particularly impressive.
- High-quality silk-screening, Tampoflex, foil-printing and hot-stamping machines make snappy-looking decoration and/or promotional messages as desired, on almost any KUM® product.
- Original artistic KUM® decorative themes, some licensed, are featured on certain fancy sharpeners.
- The KUM® product range, perhaps the world’s largest of hand-held pencil sharpeners, looks very appealing.
- The decorated KUM® product lines, our so-called “Trend-lines”, are renewed every year.

KUM® can be easily identified.

- Every sharpener blade is engraved with the KUM® logo.
- The KUM® container sharpener looks different from the competition, be it the standard functional item or the fancy collector’s model. A KUM® distributor can build consumer awareness of KUM® quality in his market over a period of time, using a few, well chosen, models to catch the public eye.

Why buy KUM® Pencil Sharpeners?

KUM® sharpens better

The blade is hard.

- It is made of ultra-hard high-carbon steel, which can cut stone, since pencil leads are made of a mixture of graphite and various types of clay, some of which are often used as abrasives. The steel used in KUM blades has a carbon content of 62 hrc. more than ball bearings (55 hrc.), for example, or high-quality knives.

The blade is sharp.

- Each blade is razor-sharp. A felt sharpening wheel (similar to leather) is used as the last step in the automatic sharpening process. Note: stainless steel cannot be used because it cannot be sharpened that much.

The blade is held absolutely immovable. Otherwise, it would not cut at all.

- A screw holds the blade onto the sharpener’s body, even on the cheapest KUM® sharpener. If the blade comes the slightest bit loose, the sharpener is completely disabled. A screw holds much better than the rivet used by some other manufacturers. The screw is one of the (few) visible signs of a good sharpener.
- The blade is curved, not flat. Acting like a spring, it exerts constant upward pressure on the screw, which keeps the screw from loosening. Other manufacturers do not make curved blades.

The pencil is held with the right precision for the right cut.

- The sharpener’s blade is curved, not flat. As it is cutting the pencil, it weaves slightly up and down, dynamically adapting to the fibrous structure of the wood instead of ripping straight through it. The cutting friction is reduced, and therefore the pencil is easier to turn. This happens because the blade, made of carbon steel, is tempered and therefore flexible; its curved shape causes it to act like a spring pressing up against the screw that holds it in place. The tension thus created gives the blade its dynamic characteristics. KUM® calls it the “Dynamic Torsion Action™”.



Dynamic Torsion Action

We are the only manufacturer worldwide to equip our sharpeners with a curved knife. Due to the curved knife, the knife edges are under constant tension and are not lifted by the pressure during sharpening. This prevents the pen tip from “springing out” or tearing. In addition, the pressure against the screw prevents it from loosening



KUM® Blade

All sharpeners are equipped with ultra hard (65 hrc) and razor sharp high carbon steel blades. These blades are harder than ball bearings or any high quality knife. This is needed because pencil leads are made of a mixture of graphite and various types of clay, which are extremely hard. Each blade is razor-sharp. A felt sharpening wheel (similar to leather) is used as the last step in the automatic sharpening process. Note: stainless steel cannot be used because it cannot be sharpened that much

Kuminox

KUMINOX is a surface refinement process. The coating on the magnesium surface of the sharpener protects against corrosion and provides it with an unprecedented silky matte finish looking distinctive and elegant

Sharpeners - Plastic Body



Coloured



Transparent



Coloured



Transparent

100 Series Single Hole

Block profile with recessed grip. These sharpeners are manufactured using tough, high impact plastic and feature an 8mm hole to suit most pencils. Available in solid colour or transparent. **Minimum purchase 24 per style.**

Coloured
Each
K1010221

Transparent
Each
K3010121

410 Series Double Hole

Two hole pencil sharpeners with 8mm and 11mm diameter holes for all pencil sizes. Wedge profile. Available in solid colours (assorted, colours may vary) or transparent. **Minimum purchase 24 per style.**

Coloured
Each
K1010521

Transparent
Each
K3010221



Sharpeners with container - Plastic Body



2-in-1 K2

Two-hole (8mm & 11mm), rectangular sharpener with small waste container. Lid features KUM logo.

Minimum purchase 12.

Each
K3033521



Rotare K1

Single hole (8mm) sharpener with container and pencil hole cover.

Minimum purchase 20.

Each
K1027221



210 K

Single hole (8mm) sharpener with dome lid, grip zone and pencil hole cover.

Minimum purchase 20.

Each
K1020421



208 K2

Two-hole (8mm & 11mm) sharpener with waste container, dome lid and pencil hole cover.

Minimum purchase 12.

Each
K1020521



Mini Tri K1

Triangular, single hole (8mm) sharpener with container and pencil hole cover.

Minimum purchase 12.

Each
K4021921



Oval K1

Oval shaped, single hole (8mm) sharpener. The upper part clicks firmly into the base.

Minimum purchase 12.

Each
K1026021



Click Snap K2

Two-hole (8mm & 11mm), circular sharpener with pencil hole covers and container underneath.

Minimum purchase 20.

Each
K1028421



Pod K2

Flexible and unbreakable! Two-hole (8mm & 11mm) sharpener with waste container underneath.

Minimum purchase 12.

Each
K3031121



4-In-1

Whether 7, 8, 10 or 11mm diameter pencils, you will hardly find a pencil that this sharpener cannot handle. Almost every pencil can be sharpened with the 4-in-1 into a perfect point. The world's first 4-hole sharpener works with round, hexagonal and even triangular pencils. Due to the 'click-snap' pencil hole cover the shavings stay in the container.

Each
K1028321

4 IN 1

8+11 mm

7+10 mm

You'll hardly find a pencil that the KUM® 4 in 1 can't handle.





Sharpener with container - Plastic Body



Pencil Pal K2

The Pencil-Pal® is a compact two-hole (8mm & 11mm) sharpener with large container to catch shavings. Features pencil hole cover and ergonomically shaped grip. Left handed version available.

Each
K1024721



1870 Series

Single hole (8mm) or two-hole (8mm & 11mm) sharpeners with waste container and pencil hole cover.

Minimum purchase 12.

1870 KK1
Single
K3030721

Each
\$1.47

1870 KK2
Double
K3030821

Each





Sharpeners - Magnesium Body



400-1K



400-1



420

400 Series Single Hole

Magnesium bodied sharpeners in wedge and block profiles. These sharpeners feature a special grip zone and an 8mm diameter hole to suit most pencils. **Minimum purchase 24.**

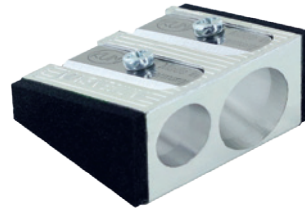
Wedge Profile Each
K1040101

Block Profile Each
K1040201

Block Profile Each
(w/recessed grip)
K1040731



410



410SG



420SG

400 Series Double Hole

Magnesium bodied sharpener in wedge profiles. Will sharpen pencils up to 8mm and 11mm in diameter.

Minimum purchase 24.

Wedge Profile Each
K1040501

400SG Series

High precision, magnesium bodied sharpeners with *Softie*® grip zones and Kuminox coating. The single hole sharpener will accept pencils up to 8mm diameter and the double will sharpen pencils up to 8mm and 11mm in diameter.

Single hole block profile - Min. purchase 20

Double hole wedge profile - Min. purchase 12

Wedge Profile Each
K1044231

Block Profile Each
K1044131

MAGNESIUM

In order to achieve a perfect sharpening result, extreme and very exact tolerances are adhered to. Magnesium is the ideal material to produce sharpeners with highest precision.





Sharpeners with container - Magnesium Body



430 M2 Ice

Barrel shaped, two-hole (8mm & 11mm), transparent sharpener.

Minimum purchase 12.

Each
K1032831



228 M2

Tall, cube-shaped, two-hole (8mm & 11mm), transparent sharpener. The upper part clicks firmly into the base ensuring no spillage.

Minimum purchase 12.

Each
K1035121



OV-G M2

Oval shaped, two-hole (8mm & 11mm) with pencil hole cover. The upper part clicks firmly into the base ensuring no spillage.

Minimum purchase 12.

Each
K1035921



Maxi M2

Barrel shaped, two-hole (8mm & 11mm) sharpener with pencil hole cover and screw on lid.

Minimum purchase 6.

Each
K1034921



Softie®



M1 POP

KUM Softie - Single

Soft plastic sharpeners that are flexible and virtually indestructible. Each has a pencil hole cover. Single hole. Assorted colours.

Minimum purchase 6

Pop (single) Each
K3470121



M2 MF



M2 POP



M2 ICE

KUM Softie - Double

Soft plastic sharpeners that are flexible and virtually indestructible. Each has a pencil hole cover. Two-hole (8 & 11mm) available. Assorted colours. **Minimum purchase 6. Left handed version available - see page 10.**

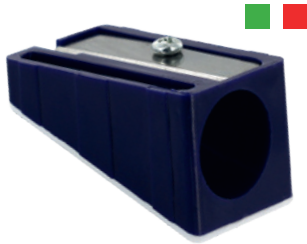
Pop (double) Each
K3470021

MF (double) Each
K1032271

Ice (double) Each
K3031721



Special Sharpeners



110-70

Plastic bodied, wedge profile sharpener for extra-large 17mm pencils. Ideal for carpenters pencils.

Minimum purchase 12.

Each
K1050121



218 T

This sharpener has two 8mm pencil holes allowing the user to produce sharp and/or a rounded taper on pencil tips. Circular shape with container to catch shavings. **Minimum purchase 12.**

Each
K1050471



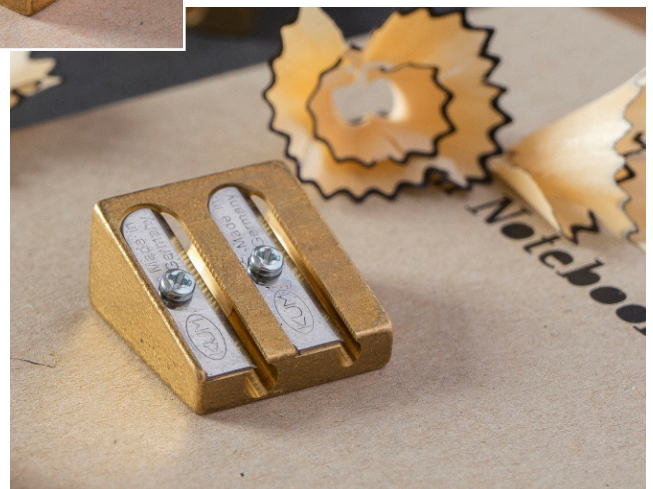
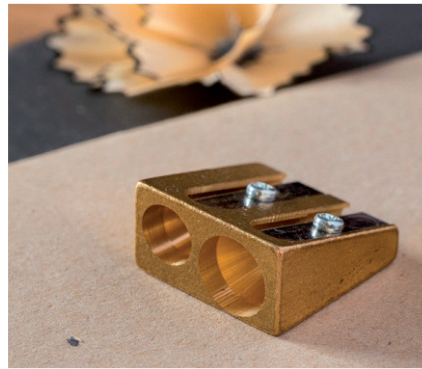
Easy Point Lead Sharpener

Sharpener specifically designed for pencil leads. The specially hardened blade will sharpen 2mm and 3.15mm leads to a precision point. The attached container collects the lead shavings for later use. On a blistercard.

Minimum purchase 24.

Each
K1057112

Brass



300 Series Double Hole

Solid and heavy double hole brass-bodied sharpener. Will sharpen pencils up to 8mm and 11mm in diameter.

Wedge Profile Each
K1040551

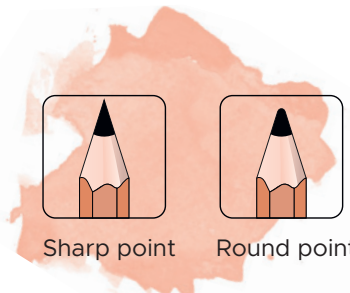


Art Sharpeners

Black Widow

The perfect short cone pencil sharpener for highly porous and powdery leads. The Black Widow allows you to produce a round and pointed tip by simply removing and inserting the innovative TipFormer system. When in place, it sharpens a short round point. When removed it sharpens to a short sharp point. It also assists in keeping the cutting blade clean. The Black Widow is ideal for pastel and/or soft pencils.

Each **K1057411**



Sharp point



Round point



Meisterwerk (The Masterpiece)

Create incredibly sharp and precise pencil points with the KUM Masterpiece. Handmade in Germany, this precision sharpener features a two-step sharpening process. The first hole shaves the wood and exposes the graphite lead core, which is then sharpened to a super-fine point by the second hole. A blue plastic stopper on the end of the sharpener prevents pencils from being over-sharpened. The Meisterwerk passes through 8 quality checks during the manufacturing process. Nothing is left to chance.

Each **K1057211**

Shapes the wood and lead in two separate steps. Slidable brake for only shaving the wood with 2 replacement blades. Delivered in plastic box with neoprene case.

MEISTERWERK



Glass M1

Produced to celebrate the 100 year anniversary of the KUM brand. Single hole (8mm) magnesium sharpener with screw cap and elegant glass container.

Each **K1064711**



TIMELESS AND ELEGANT!



Long Point Sharpeners

KUM long point sharpeners are popular among artists, architects and designers. They create an extremely long and thin point allowing tiny details and lines to be drawn easily. The point will stay sharp for an extended period of time meaning they don't have to be sharpened as often. Only high quality pencils are recommended for use in long point sharpeners.

202-24 Long Point Sharpener

The small angle in this sharpener allows an extremely long and thin point to be formed, enabling tiny details and lines to be easily drawn. The point will stay sharp longer than when sharpened using a standard sharpener. As the point is long and thin, only high quality pencils are suitable for use with this sharpener.

Minimum purchase 12

Each **K3035721**



400 – 5L Long Point Sharpener

The small angle in this sharpener allows an extremely long and thin point to be formed, enabling tiny details and lines to be easily drawn. The point will stay sharp longer than when sharpened using a standard sharpener. As the point is long and thin, only high quality pencils are suitable for use with this sharpener.

Minimum purchase 24.

Each **K1040601**



Automatic AS2

The AS2 is a single hole (8mm) sharpener that shapes the wood, then the lead. An automatic brake prevents over-shaping/sharpening. Includes 2 spare blades.

Each **K1053021**



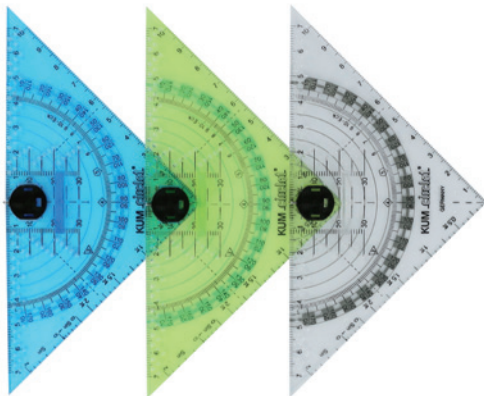
Automatic AS3

Two step long cone sharpener. The first blade removes wood from the lead until it reaches the automatic stop. The 2nd blade sharpens the lead to an extra long point. The automatic stop prevents further sharpening.

Each **K1055511**



Triangle Protractors



293C TB

KUM Triangle Compass Protractor - 16cm

Compass-triangle protractors, with finger grip and anti-smudge rests. Students can draw angles and directed edges, circles and analogies with the single drawing instrument.

Each **K2091201**



493C TB

KUM Triangle Compass Protractor - 22cm

Compass-triangle protractors, with finger grip and anti-smudge rests. Students can draw angles and directed edges, circles and analogies with the single drawing instrument.

Each **K2091301**



Drawing Instruments

Why buy KUM® Drawing instruments?

KUM® draws better.

- To ensure millimeter precision KUM® uses high precision injection moulds (all built in our factory) that even take into consideration the shrinkage of the plastic when it is ejected from the moulds and cools. By doing this, we can ensure that all rulers' and protractors' indentations are very precise and identical.
- Temperature normed precision hot stamps ensure that the scales are stamped to exact precision onto the ruler and protractor slats. An inexpensive tampo- or silkscreen print, often used on cheap drawing instruments, can never offer this kind of precision

KUM® STOP&GO

The **KUM® STOP&GO** series sets new standards for drawing instruments. The innovative and patented **KUM® STOP&GO** Grips allow a precise fixation of the drawing instrument and thus guarantee millimetre accurate working. **KUM® STOP&GO** Grips enable a fixed positioning on the paper and thus prevent slipping in case of parallel or longitudinal displacement.



L03 TB

KUM Stop & Go Flexible Ruler

30cm ruler with Stop & Go removable grips. The innovative Stop & Go Grips allow a precise fixation of the drawing instrument and thus guarantee millimetre accurate working. Manufactured from an extremely flexible material, free of harmful phthalates.

Each **K2270219**



262 TB

KUM Stop & Go Triangle Protractor

16cm Triangle protractor with Stop & Go removable grips and anti-smudge rests. The innovative Stop & Go Grips allow a precise fixation of the drawing instrument and thus guarantee millimetre accurate working. Manufactured from an extremely flexible material, free of harmful phthalates.

Each **K2270319**



KUM Softie Extreme Flex 30cm Ruler

Softie Flex drawing instruments are manufactured with an ultra-modern material making them extremely flexible and breakproof. Ruler measures 30cm in length. Left hand version available.

Each **K2250519**



KUM Softie Flex Protractor

Softie Flex drawing instruments are manufactured with an ultra-modern material making them extremely flexible and breakproof. 16cm triangle protractor with smudge rests.

Each **K2250719**



LEFT HANDED PRODUCTS

Why are left-handed materials so important?

In order to develop and promote abilities and skills, the right tools are needed. Even today, left-handed children, find themselves in a situation where they cannot use adequately use sharpeners, scissors or rulers. This means that the children cannot develop their abilities in a targeted and effective manner, adopt incorrect movement sequences and need significantly more time, strength, energy, stamina and patience to carry out their activities. This leads to frustration, often avoidance of the activity. This can be mitigated by using the right products: in this case products designed specifically for the left handed.

KUM® recognised this trend long ago and is continuously developing and strengthening its position as specialist for left handed products with a range of sharpeners, flexible left-hand drawing instruments, left-hand scissors, writing aids and desk pads.

Sharpeners



2-in-1 Lefty®

Two-hole (8mm & 11mm) sharpener with small waste container.

Each
K1053421



Click Snap K2 Lefty®

Two-hole (8mm & 11mm), circular sharpener with pencil hole covers and container underneath.

Each
K9010321



Oval K2 Lefty®

Oval shaped, two-hole (8mm & 11mm) sharpener. The upper part clicks firmly into the base.

Each
K1053821



Pencil Pal K2 Lefty®

The Pencil-Pal® is a compact two-hole (8mm & 11mm) sharpener with large container to catch shavings. Features pencil hole cover and ergonomically shaped grip.

Each
K9010521



Softie M2 Lefty®

Soft plastic sharpeners that are flexible and virtually indestructible. Each has a pencil hole cover. Two-hole (8 & 11mm). Assorted colours.

Each
K1052621



Medi Grip M2 Lefty®

The KUM® Medi Grip uses the body's own physiology to gently move the fingers of the left-handed person into the correct position, thus ensures a secure hold during sharpening.

Each
K1054111

The **KUM®** Medi Grip uses the body's own physiology to gently move the fingers of the left-handed person into the correct position, thus ensures a secure hold during sharpening.

The **KUM®** Medi Grip was developed in cooperation with Dr. Johanna Barbara Sattler, a licensed psychotherapist, psychologist and **KUM®** GmbH & Co. KG.



KUM Pop Cut School Scissors

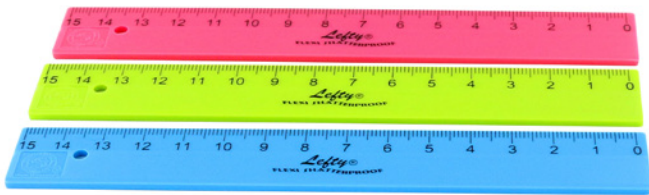
School scissors with 133mm blade, blunt tip and plastic handles.

Left Hand Each
K9050512

LEFT HANDED PRODUCTS

Rulers

Left-handers tend to work from right to left. A left-handed ruler favors this direction, the 0 mark is on the right hand end of the ruler and the end number mark on the left.



KUM Softie Left-Handed Flex Ruler 15cm

Softie Flex drawing instruments are manufactured with an ultra-modern material making them extremely flexible and breakproof. Ruler measures 15cm in length. Scale from right to left.

Each **K2012129**

KUM Softie Left-Handed Flex Ruler 30cm

Softie Flex drawing instruments are manufactured with an ultra-modern material making them extremely flexible and breakproof. Ruler measures 30cm in length. Scale from right to left.

Each **K2012229**



KUM Softie Extreme Flex 30cm Rulers

An even more flexible ruler than the standard Flex ruler. Scale from right to left.

Each **K9020219**



Lefty Display

Attractive and compact countertop display containing a selection of KUM's most popular left-handed products. Contains 7 x Pencil Pal Lefty, 6 x Click Snap Lefty, 5 x Softie M2, 12 x 2-in-1 Lefty, 20 x Ultra CLN erasers, 20 x Softie Flex 15cm Ruler, 15 x Sattler Grips, 3 x Softie Cut Round Lefty scissors and 2 x Softie Cut Sharp Lefty scissors.

Display measures 305x285x305mm

Display **K9020424**

Erasers



KUM Ultra Cln Erasers

Super soft erasers that remove graphite and coloured pencil from without smudging, staining or damaging the paper. They can be used on a variety of surfaces including paper, cardboard and wood. Ultra Cln erasers are free from latex, PVC and phthalates. Large erasers measure 62x20x13mm and small measure 44x22x13mm. Available in white or black.

Small White
Each

Large White
Each

Small Black
Each

Large Black
Each



KUM Natural Rubber Erasers

Manufactured using high quality and safe raw materials, as well as modern production methods, which guarantee perfect erasing results. These erasers are free from PVC, phthalates and other harmful substances. Available in large (45x35x10mm), small (40x27x8mm) and ergonomic styles.

Small (40x27x8mm)
Each
K5090211

Large (45x35x10mm)
Each
K5090311

Ergonomic
Each
K5090511

KUM Kraft Eraser

Plastic, PVC free, general purpose eraser. Eraser is protected by thin kraft card band. Eraser measures 44x22x13mm.

Each
K5091111



KUM Pastel Coloured Eraser

Small, pastel coloured, PVC free, plastic, general purpose eraser. Eraser is protected by thin, pastel coloured cardboard band. Eraser measures 44x22x13mm.

Each **K5091011**

Scissors



KUM General Purpose Scissors

All-purpose scissors with titanium blade for especially tough jobs. 25cm blade. Blister carded.

Each
K5070612

KUM Black Titan Scissors

Premium quality scissors providing precise cuts with long lasting sharpness. They feature a high corrosion resistance, extreme mechanical load capacity, very good anti-stick property and rubberized soft grips that lie comfortably in the hand. Blister carded. Each
K5071412

KUM Pop Cut School Scissors

School scissors with 133mm blade, blunt tip and plastic handles. Available in left and right-handed versions.

Right Hand Each
K5070922

Left Hand Each
K9050512

Ergonomic Pencil Grips

9. Ergonomics KUM®

- KUM® has developed an active cooperation with Dr. Barbara Sattler, a reputed expert authority in developing ergonomic school products.
- Thanks to this cooperation, KUM® has developed and strength not only the ergonomic characteristics of its sharpeners but the Sattler Grips, an innovation which gently guides the fingers into the ergonomically correct writing position.
- This facilitates not only the development of the fine motor skills of the children but helps to avoid fatigue when writing.



Sattler Tri Grip

The Sattler Tri-Grip helps facilitate the ideal tripod-grip, essential for developing writing skills. The user's fingers are intuitively guided into the correct writing position indicated by the depressions for index finger and thumb and the knobby surface for middle finger. The slightly slanted front side of the Tri-Grip lets the user better see what they have written and does not impair visibility of the pencil/pen point. The non-slip surface ensures a secure hold.

Each **K4060122**
Tub 50 **K4060127**



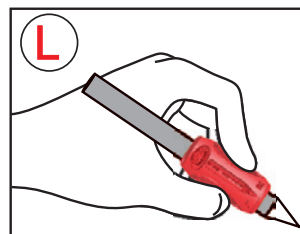
Sattler Grip

The Sattler Tri-Grip helps facilitate the ideal tripod-grip, essential for developing writing skills. The user's fingers are intuitively guided into the correct writing position indicated by the depressions for index finger and thumb and the knobby surface for middle finger. The slightly slanted front side of the Tri-Grip lets the user better see what they have written and does not impair visibility of the pencil/pen point. The non-slip surface ensures a secure hold.

Tub 50 **K4060027**

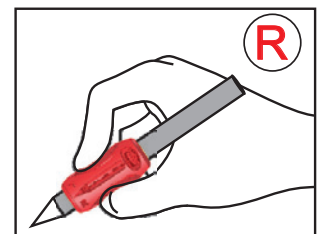


Fits on Pencils, Markers, Pens,
Crafting Knives, Brushes etc.



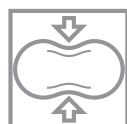
Left-Handed Persons

Place your thumb
on the recess
marked with „L“



Right-Handed Persons

Place your thumb
on the recess
marked with „R“

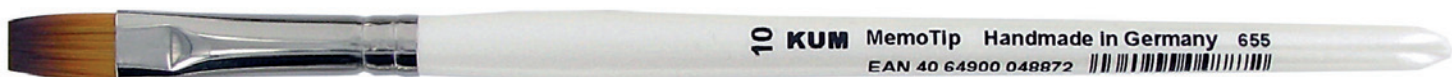


Why buy KUM® brushes?

KUM® paints better

- KUM® uses only high quality materials for its brushes (handles, ferrules, hair/fibers) to ensure that: our brushes don't lose hair, the brush heads maintain their form for a long time and that the absorption and pay-off characteristics are perfectly adapted to the individual use.
- To become a Brush Maker in Germany, one must go through a practical (on the job) and theoretical (at a brush maker's school) apprenticeship for 3 years and then take a test in front of the Chamber of Commerce. After additional 5 years of practical work and school, one can take his test to become a Master Brush Maker. We have 3 such Master Brush Makers working in our factory, to ensure the highest quality level possible and to make sure that we can offer a constant stream of innovations to our customers, like for example Memory Point Brushes that surpass in characteristics any other brush that can be found on the market today.

MEMORY POINT BRUSHES

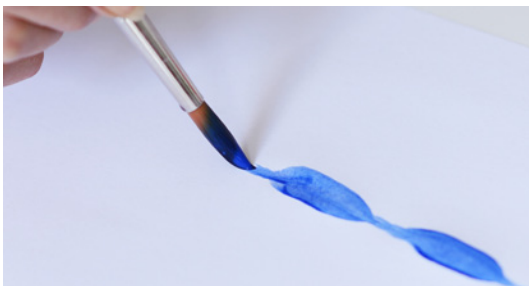


Handmade in Germany by Master Brush makers. The high-tech fibres in KUM Memory Point brushes were exclusively developed for KUM. The material used and its special processing give the Memory Point brush range an array of special properties that surpass the features present in all previously known synthetic fibres. The Memory Point brush has a perfectly shaped brush tip, making it possible to work extremely precisely and paint the smallest details with every brush size. The brush fibres are extremely elastic, allowing the fine tip to return to its original shape, even after repeated use. This makes Memory Point brushes very durable and long-lasting. The outstanding holding capacity of these brushes makes them especially suitable for large-scale works. Colour is optimally stored and released allowing the user to create even surfaces and colour gradients easily and quickly.

Memory Point brushes are perfect for using with watercolours, gouache, acrylics, silk and glass paints. They feature a short handle and the ergonomic, smooth and round surface makes them comfortable to hold for long periods.



Round Flat Cat Tongue Slanted Flat



Pointed Round

Size 00	Each	K5113311
Size 0	Each	K5113411
Size 1	Each	K5113511
Size 2	Each	K5113611
Size 3	Each	K5113711
Size 4	Each	K5113811
Size 5	Each	K5113911
Size 6	Each	K5114011
Size 7	Each	K5114111
Size 8	Each	K5114211
Size 9	Each	K5114311
Size 10	Each	K5114411
Size 11	Each	K5114511
Size 12	Each	K5114611
Size 14	Each	K5114711

Flat

Size 2	Each	K5114811
Size 4	Each	K5114911
Size 6	Each	K5115011
Size 8	Each	K5115111
Size 10	Each	K5115211
Size 12	Each	K5115311
Size 14	Each	K5115411
Size 16	Each	K5115511
Size 18	Each	K5115611
Size 20	Each	K5115711
Size 22	Each	K5115811
Size 24	Each	K5115911

Cat Tongue/Filbert

Size 6	Each	K5140011
Size 8	Each	K5140111
Size 10	Each	K5140211
Size 12	Each	K5140311
Size 14	Each	K5140411

Slanted Flat

Size 6	Each	K5140511
Size 8	Each	K5140611
Size 10	Each	K5140711
Size 12	Each	K5140811
Size 14	Each	K5140911

Lettering Set 3

Contains one Round Brush each in sizes 1, 3 and 6.
Set 3 **K5119416**

Watercolour Brush Set 4

Created in collaboration with watercolour artist Tanja “Frau Holle” Cappell. Set contains one Round brush each in size 00, 2, 6 & 8.
Set 4 **K5143716**

Memory Point Brush Display

Contains 12 of each of the 37 brushes listed above.
444 brushes in total!
Display measures 35.7 cm (L) x 19.8 cm (W) x 45.5 cm (H)
Stocked display **K5119124**

BLACK LINE BRUSHES



Specifically developed for oil painting, the Brislon fibres in the Black Line range make these brushes unique and a must for every oil painter. The synthetic fibres have a hollow core which increases colour absorption and provides a high degree of stability. This allows for the distribution of high viscosity mediums such as oil paints more easily. The thin, tapered brush tip is particularly suitable for finer and smaller paintings. The unique properties of the Brislon fibres aids in the cleaning of the brushes, ensuring a useful and long life. Available in Flat, Round and Cats Tongue styles.



Flat

Size 2	Each	K5121611
Size 4	Each	K5121711
Size 6	Each	K5121811
Size 8	Each	K5121911
Size 10	Each	K5122011
Size 12	Each	K5122111
Size 14	Each	K5122211
Size 16	Each	K5122311
Size 18	Each	K5122411
Size 20	Each	K5122511
Size 24	Each	K5122611

Cat Tongue/Filbert

Size 2	Each	K5122711
Size 4	Each	K5122811
Size 6	Each	K5122921
Size 8	Each	K5123011
Size 10	Each	K5123111
Size 12	Each	K5123211
Size 14	Each	K5123311
Size 16	Each	K5123411
Size 20	Each	K5123511
Size 24	Each	K5123611

Round

Size 2	Each	K5123711
Size 4	Each	K5123811
Size 6	Each	K5123911
Size 8	Each	K5124011
Size 10	Each	K5124111
Size 12	Each	K5124211
Size 14	Each	K5124311
Size 16	Each	K5124411



WOOD LINE BRUSHES



The Woodline brush range was developed specifically for the requirements of acrylic painting. The innovative brush fibres are handcrafted using a special process which allows the user to transition between and paint both the finest contours and largest areas. The smallest details can be reproduced precisely and the extra-long handle allows the artist view their work from enough distance for perspective and image design. The outstanding properties of the synthetic fibres guarantee a perfectly shaped brush tip each time, even after repeated use and cleaning. Available in Flat, Round and Cats Tongue styles.



Round

Size 1	Each	K5124511
Size 2	Each	K5124611
Size 4	Each	K5124711
Size 6	Each	K5124811
Size 8	Each	K5124911
Size 10	Each	K5125011
Size 12	Each	K5125111
Size 14	Each	K5125211

Flat

Size 2	Each	K5125311
Size 4	Each	K5125411
Size 6	Each	K5125511
Size 8	Each	K5125611
Size 10	Each	K5125711
Size 12	Each	K5125811
Size 14	Each	K5125911
Size 16	Each	K5126011
Size 18	Each	K5126111
Size 20	Each	K5126211
Size 24	Each	K5126311

Cat Tongue/Filbert

Size 6	Each	K5126411
Size 8	Each	K5126511
Size 10	Each	K5126611
Size 12	Each	K5126711
Size 14	Each	K5126811
Size 16	Each	K5126911
Size 18	Each	K5127011
Size 20	Each	K5127111



Flat



Round



**Cat
Tongue**

SCHOOL AND ART



Round

Size 0	Each	K5141019
Size 1	Each	K5141119
Size 2	Each	K5141219
Size 3	Each	K5141319
Size 4	Each	K5141419
Size 5	Each	K5141519
Size 6	Each	K5141619
Size 7	Each	K5141719
Size 8	Each	K5141819
Size 10	Each	K5141919
Size 12	Each	K5142019
Size 14	Each	K5142119

Flat

Size 2	Each	K5142219
Size 4	Each	K5142319
Size 6	Each	K5142419
Size 8	Each	K5142519
Size 10	Each	K5142619
Size 12	Each	K5142719
Size 14	Each	K5142819
Size 16	Each	K5142919
Size 18	Each	K5143019
Size 20	Each	K5143119

School and Art Brush Display

- 24 each of Round brushes 0, 1, 2 & 5
- 12 each of Round brushes 3, 4, 6, 7, 8, 10, 12 & 14
- 24 each of Flat 2, 4 & 8
- 12 each of Flat 6, 10, 12, 14, 16, 18 & 20.
- 348 brushes in total!

Display measures 27.0 cm (L) x 26.5 cm (W) x 39.0 cm (H)

Stocked display

K5149324

KUM School & Art brushes feature special synthetic fibres that are strong and elastic. They are suitable for use across a range of media including acrylics, watercolour, gouache and poster paints. The Round brushes have a pointed tip and are perfect for painting small details and precise lines. The Flats are ideal for creating colour gradients and laying down large areas of colour.



FRENCH AQUA WATERCOLOUR BRUSHES

Developed by Artists for Artists. The French Aqua brush offers artists a wide range of new possibilities – from creating large scaling work and colour transitions to soft watercolour techniques. These brushes are made using a blend of fibres with varying diameters in a perfect mix, which translates to an extremely high storage capacity, superior to the traditional petit gris brushes made out of natural hair. The thin synthetic fibres imbue an extremely high elasticity with a high memory making it ideal for soft techniques, while also allowing the artist to also create the finest details. These features make the French Aqua range perfect for Watercolour Sketching. The white pearled handle gives this brush an elegant look.



Round

Size 4	Each	K5144011
Size 6	Each	K5144111
Size 8	Each	K5144211
Size 10	Each	K5144311
Size 12	Each	K5144411

WATERCOLOR BOX

KUM Watercolour Paint Box Set 12 + 1
Featuring brilliant, bright colours with high opacity the KUM watercolour paint box is ideal for the artist on the move. The 12 colour pans are in interchangeable bowls and can be removed from the box if necessary. The lid contains 3 mixing wells and the box has a separate tray for brushes. A tube of opaque white is included to help mix brighter colours. Non-toxic. Manufactured in Germany.
Set 12 + 1 **K5143201**



Displays

Memory Point Brush Display

Contains 12 of each of the 37 brushes listed above.

444 brushes in total!

Display measures 35.7 cm (L) x 19.8 cm (W) x 45.5 cm (H)

Stocked display

K5119124



School and Art Brush Display

- 24 each of Round bushes 0, 1, 2 & 5
- 12 each of Round brushes 3, 4, 6, 7, 8, 10, 12 & 14
- 24 each of Flat 2, 4 & 8
- 12 each of Flat 6, 10, 12, 14, 16, 18 & 20.
- 348 brushes in total!

Display measures 27.0 cm (L) x 26.5 cm (W) x 39.0 cm (H)

Stocked display

K5149324



Black and White Quotes Display

Attractive and compact countertop display combining 2 popular pencil sharpener ranges and ruler with life quotes written on the outside. The display contains 14 sharpeners each of the 1870 M2 (single hole 8mm, container) and 29 sharpeners each of the 208 M2 (double hole 8 & 11mm, container) in black and white styles plus 10 pieces each of a 15cm ruler in black (with white script) and 10 each in white (with black script). Display measures 305x285x305mm.
 Display **K3700024**



Wood Display

Attractive and compact countertop display containing a selection of KUM's wooden range. Contains 48 x single-hole Beechwood sharpeners, 24 x double-hole Beechwood sharpeners, 15 x wooden ruler 15cm, 21 x Oko 1 container sharpeners made of recycled cardboard in 3 designs and 15 craft erasers. Display measures 305x285x305mm
 Display **K1070424**

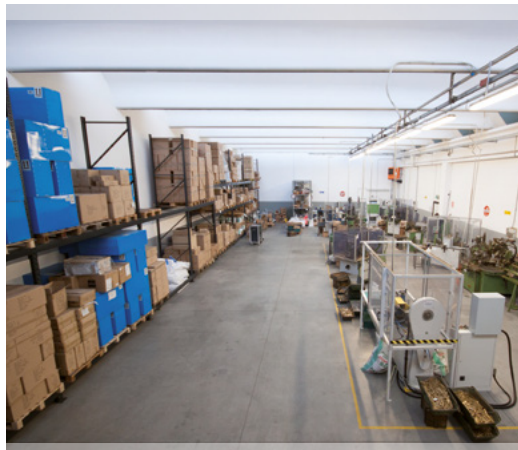


Lefty Display

Attractive and compact countertop display containing a selection of KUM's most popular left-handed products. Contains 7 x Pencil Pal Lefty, 6 x Click Snap Lefty, 5 x Softie M2, 12 x 2-in-1 Lefty, 20 x Ultra CLN erasers, 20 x Softie Flex 15cm Ruler, 15 x Sattler Grips, 3 x Softie Cut Round Lefty scissors and 2 x Softie Cut Sharp Lefty scissors. Display measures 305x285x305mm.
 Display **K9020424**



Who we are



Made in Italy, synonymous with guarantee and quality

Fratelli Botti was born in the early post-war years and, through three generations, has maintained its strong “family” imprint to this day. Located in Palosco, which, as is now known, is still the European capital of the compass, the company is spread over a total area of about 2000 square meters, with two operational structures. One more purely productive and one hij logistics and commercial were recently acquired.

The machines used in the production process are now automated with the help of plc, an association between electronics and mechanics that allows you to carry out the most difficult and minute processes that a technical tool such as the compass requires. Our workshop is currently able to produce up to 5000

finished pieces per day , and for extraordinary supplies deriving from the seasonality of the sector, sometimes the collaboration of local subcontractor craftsmen is used; a process therefore that begins and ends in Palosco and that allows us to label all our products with the “made in Italy “, synonymous with quality that has distinguished us for more than fifty years.

Through new commercial strategies and thanks also to the introduction of the marketing of new complementary products to the compass, today F.lli Botti is able to meet the demands of the increasingly demanding European market of large-scale retail trade , both for the school sector and the more purely technical and precision sector.

The compass: an artisanal product made with ancient care

As in all sectors of the Italian artisan product, from manufacturing to food, the compass has maintained the uniqueness and authenticity typical of the handcrafted product over time in which many stages of processing, such as minute assemblies, the packaging and above

all the control tests of each single piece are still entirely manual. Even today, our compasses are “reviewed” by hand one by one, by the skill of those rare holders of a profession that is now on the verge of extinction.



DRAWING COMPASSES - LUXURY SERIES



581 Fixed Leg School Compass

Zinc alloy finish, 135mm diameter with fixed leg and leads holder in plastic case

Each **BT0581LUX**



501 Jointed Leg School Compass plus accessories

Zinc alloy finish, 135mm diameter with jointed leg plus leads holder, ruling pen, ruling pen tip and handle.

Each **BT0501LUX**



507 Jointed Leg School Compass plus Bow Compass and Accessories

Zinc alloy finish, 135mm diameter with jointed leg plus Bow compass, ruling pen, ruling pen tip and handle.

Each **BT0507LUX**



510 Ultimate Jointed 135mm & Bow Compass Set with Accessories

The ultimate zinc alloy school/college technical drawing set containing all required items including: a jointed leg 135mm compass, small bow compass, set of dividers, spare leads, ruling pen point plus plastic handle, a rapidograph pen attachment, a 0.5mm mechanical pencil in a plastic storage case.

Each **BT0510LUX**



601 Jointed Leg Technical Compass plus accessories

Brass finish, 135mm diameter with jointed leg plus leads holder, ruling pen, ruling pen tip and handle.

Each **BT0601LUX**



751 Jointed Leg Technical Compass

Brass finish, 150mm diameter with jointed leg plus leads holder.

Each **BT0751LUX**



DRAWING COMPASSES - LUXURY SERIES



800R Jointed Leg Telescopic Technical Compass

Zinc alloy finish, 155mm diameter with jointed legs plus leads holder and Rapidograf pen holder.

Each **BT800RLUX**



2004 Fixed Leg Bow Compass

Zinc alloy finish, 165mm diameter with fixed leg, micrometric opening plus KUM leads sharpener and leads holder.

Each **BT2004LUX**



2003 Jointed Leg Bow Compass plus accessories

Zinc alloy finish, 175mm diameter with jointed leg, micrometric opening plus leads holder and Rapidograf pen holder.

Each **BT2003LUX**



2009 Jointed Leg Bow Compass plus accessories

Zinc alloy finish, 175mm diameter with jointed leg, micrometric and quick opening plus leads holder and Rapidograf pen holder.

Each **BT2009LUX**



DRAWING COMPASSES - BASIC SERIES

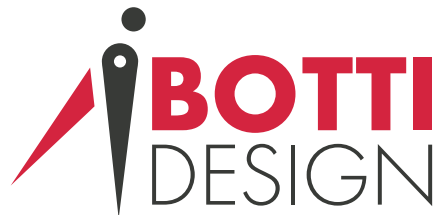


225TR School Compass

Plastic compass, 140mm diameter with pencil holder and wooden pencil.

Each **BT00225TR** **\$3.39**

KUM®



Creativity unlimited

S&S Wholesale Pty. Limited



1300 731 529



1300 739 715



orders@sswholesale.com.au



www.sswholesale.com.au



@sscreativityunlimited